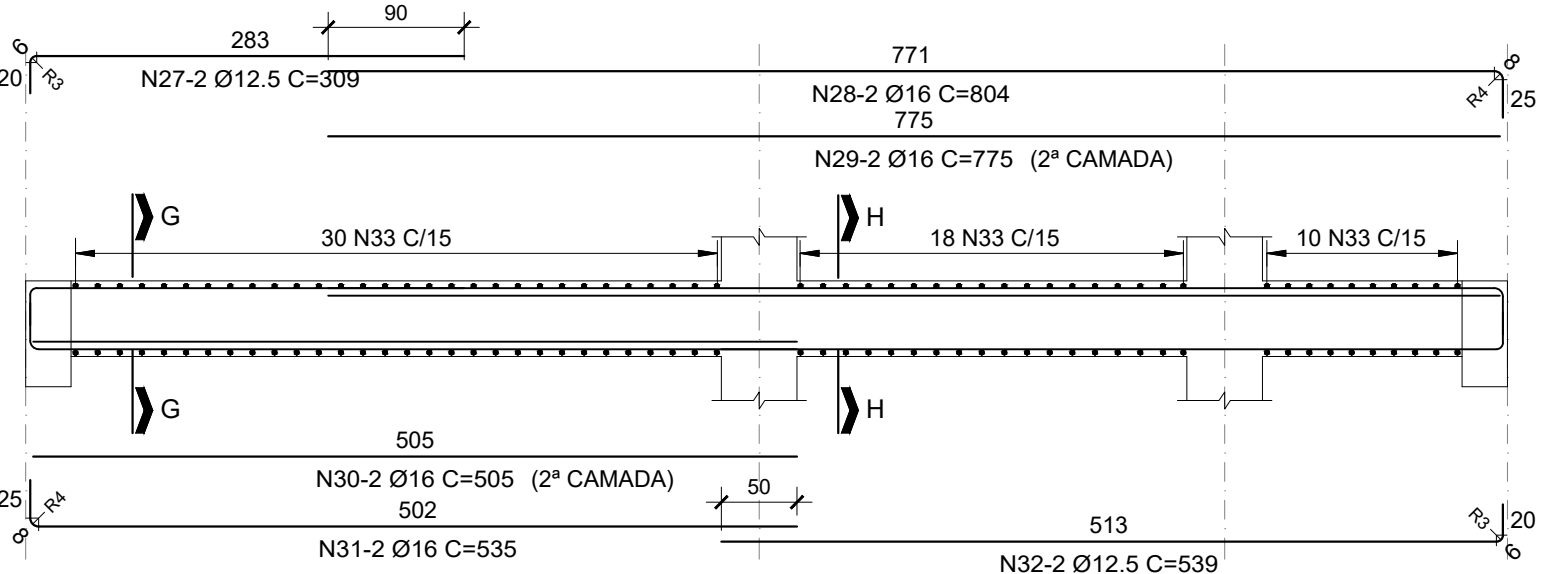
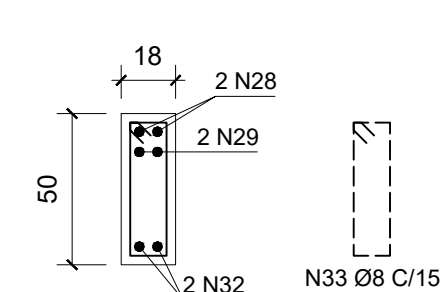
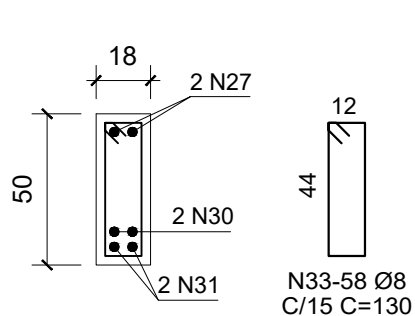
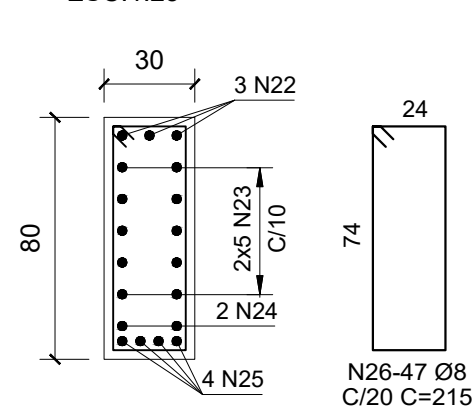
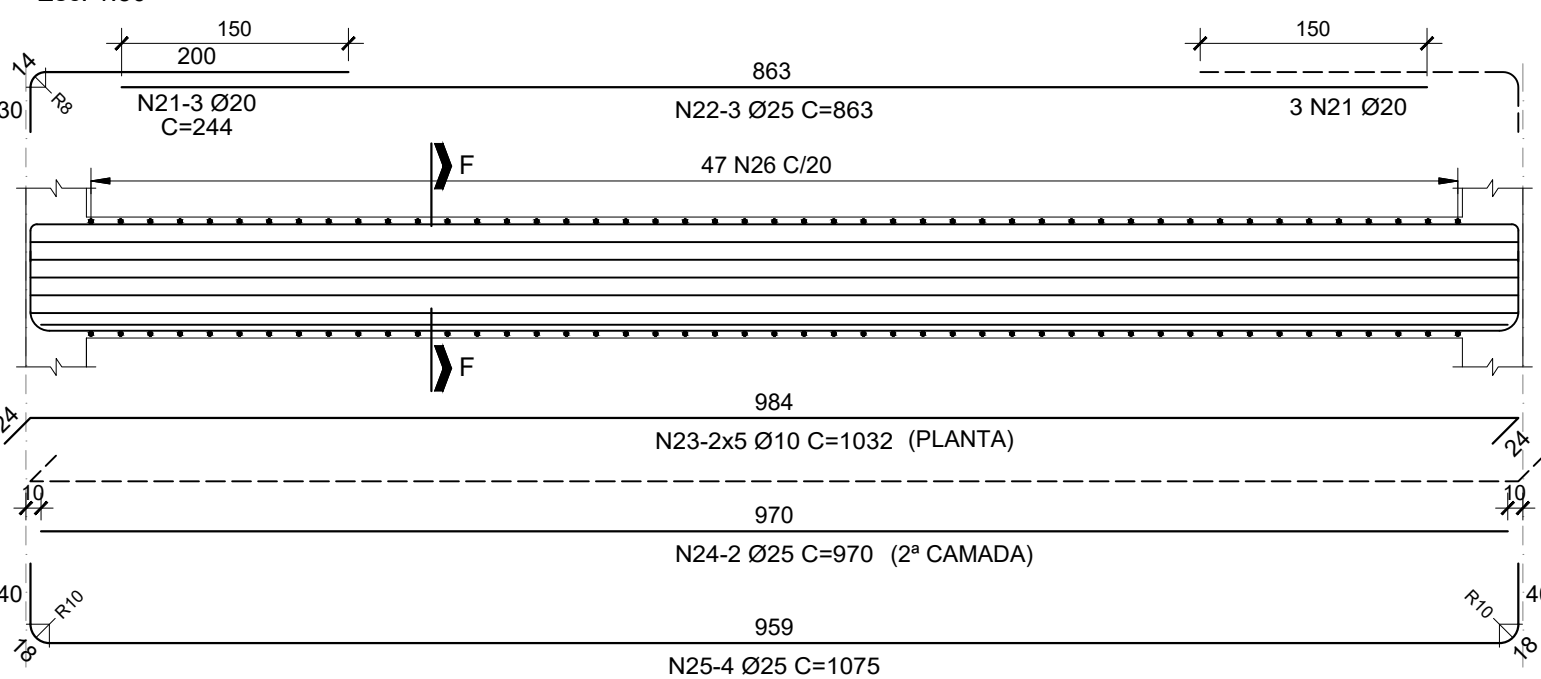
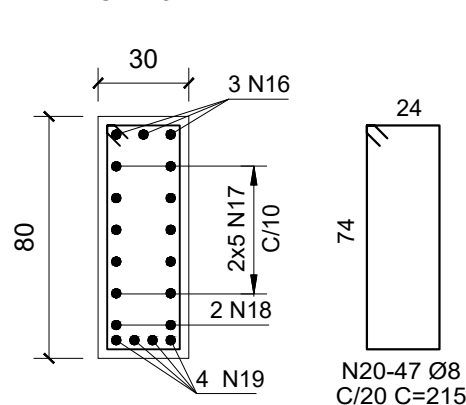
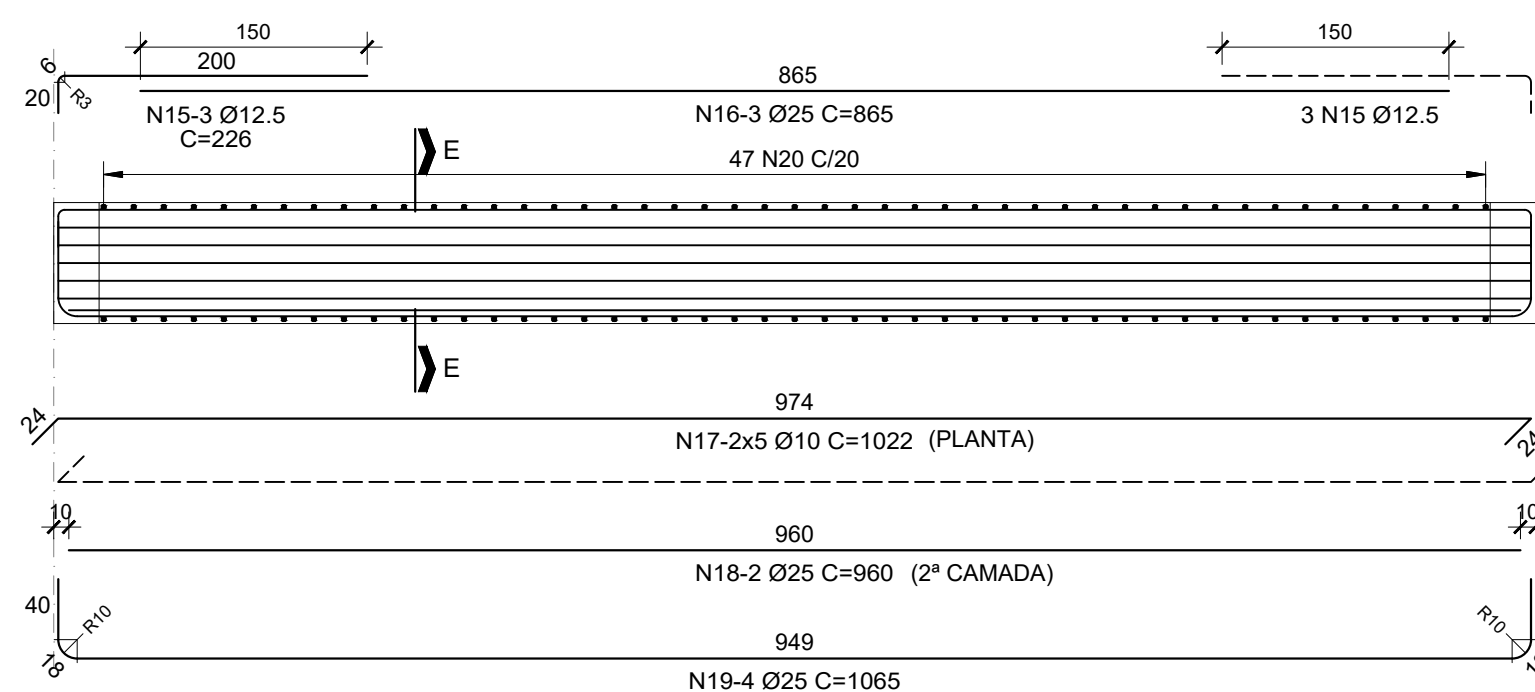
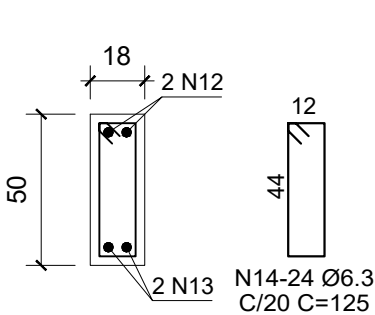
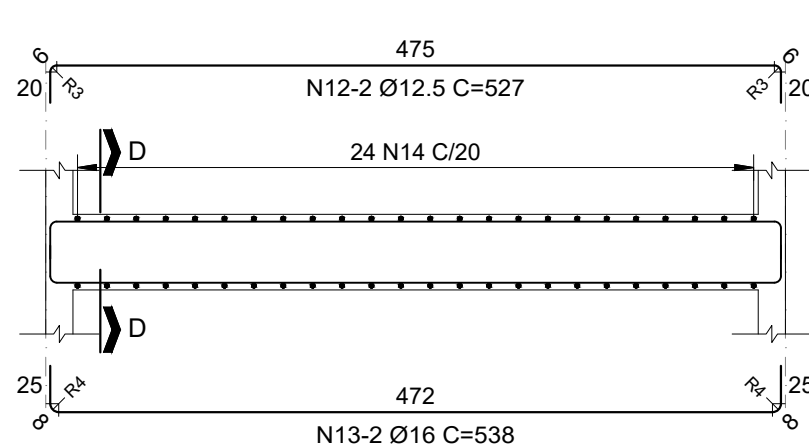
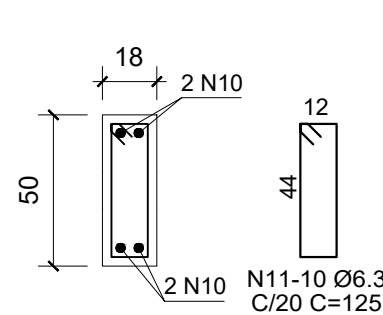
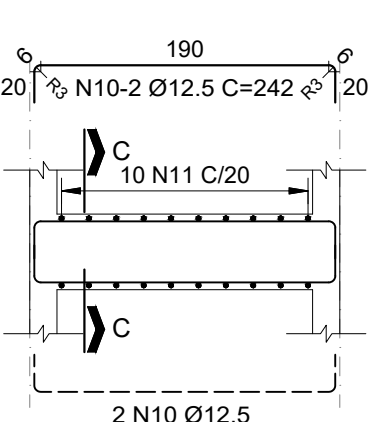
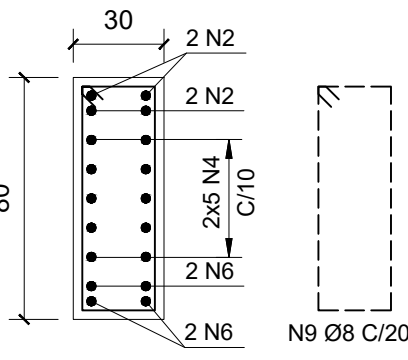
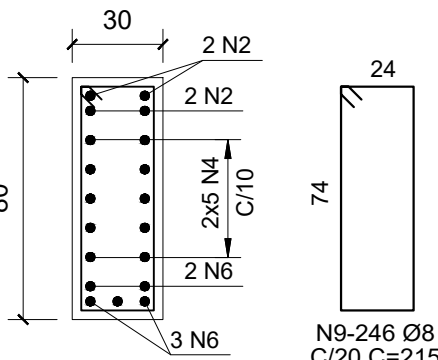


Esc. 1:50



CONTINUA ABAIXO



| TABELA DE FERROS | | | | |
|------------------|-----------|-----|--------------|-----------|
| N | Ø (mm) | Q | COMPRIMENTOS | |
| | | | UNIT.(cm) | TOTAL(cm) |
| 1 | 20 | 8 | 629 | 5032 |
| 2 | 25 | 40 | 950 | 38000 |
| 3 | 20 | 8 | 614 | 4912 |
| 4 | 10 | 20 | CORRIDO | 106480 |
| 5 | 20 | 8 | 165 | 1320 |
| 6 | 20 | 36 | 840 | 30240 |
| 7 | 25 | 16 | 840 | 13440 |
| 8 | 20 | 8 | 159 | 1272 |
| 9 | 8 | 492 | 215 | 105780 |
| 10 | 12.5 | 4 | 242 | 968 |
| 11 | 6.3 | 10 | 125 | 1250 |
| 12 | 12.5 | 2 | 527 | 1054 |
| 13 | 16 | 2 | 538 | 1076 |
| 14 | 6.3 | 24 | 125 | 3000 |
| 15 | 12.5 | 42 | 226 | 9492 |
| 16 | 25 | 21 | 865 | 18165 |
| 17 | 10 | 70 | 1022 | 71540 |
| 18 | 25 | 14 | 960 | 13440 |
| 19 | 25 | 28 | 1065 | 29820 |
| 20 | 8 | 329 | 215 | 70735 |
| 21 | 20 | 24 | 244 | 5856 |
| 22 | 25 | 12 | 863 | 10356 |
| 23 | 10 | 40 | 1032 | 41280 |
| 24 | 25 | 8 | 970 | 7760 |
| 25 | 25 | 16 | 1075 | 17200 |
| 26 | 8 | 188 | 215 | 40420 |
| 27 | 12.5 | 4 | 309 | 1236 |
| 28 | 16 | 4 | 804 | 3216 |
| 29 | 16 | 4 | 775 | 3100 |
| 30 | 16 | 4 | 505 | 2020 |
| 31 | 16 | 4 | 535 | 2140 |
| 32 | 12.5 | 4 | 539 | 2156 |
| 33 | 8 | 116 | 130 | 15080 |

| RESUMIO CA-50 | | | |
|---------------|------|----------|-----------|
| Ø (mm) | kg/m | COMPR(m) | PESO (kg) |
| 6.3 | 0.25 | 42.50 | 11 |
| 8 | 0.40 | 2320.15 | 928 |
| 10 | 0.63 | 2192.80 | 1382 |
| 12.5 | 1.00 | 149.06 | 149 |
| 16 | 1.60 | 115.52 | 185 |
| 20 | 2.50 | 486.32 | 1216 |
| 25 | 4.00 | 1481.81 | 5927 |
| TOTAL: | | | 9798 |

NOTAS:

- 1 - MEDIDAS EM CENTÍMETRO, EXCETO INDICAÇÃO CONTRÁRIA
- 2 - MATERIAIS:
 - CONCRETO ESTRUTURAL fck = 30 MPa (FATOR A/C=0,5)
 - AÇO CA50
- 3 - COBRIMENTO DAS ARMADURAS:
c = 3,0 cm
- 4 - VERIFICAR TODAS AS MEDIDAS E NÍVEIS NA OBRA.
- 5 - O CONTROLE TECNOLÓGICO PARA GARANTIA DA QUALIDADE DOS MATERIAIS E SERVIÇOS DEVERÁ SEGUIR TODAS AS RECOMENDAÇÕES CONSTANTES DAS SEGUINTES NORMAS DA ABNT: NBR12655, NBR7480, NBR 7481, NBR 7482 E NBR 7483.